



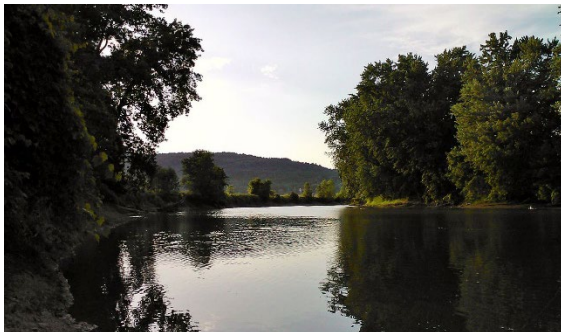
# Vermont Fish & Wildlife Department

## Otter Creek

### Streambank Management Area

#### General Description

Otter Creek is the longest river in Vermont, stretching just over 100 miles from Dorset north to where it empties into Lake Champlain in Ferrisburgh. The headwater reaches support coldwater fisheries of species such as Brook, Brown, and Rainbow Trout. The lower reaches feature these coldwater species as well as warmwater species like Smallmouth Bass, Northern Pike, and many species, like Bowfin and Crappie, from Lake Champlain. Though several dams exclude these lake species from Otter Creek SMA, a diverse mix of warm- and coldwater fish remain in this middle section of the river. Many other State lands give additional access to Otter Creek. Pomainville, Clarendon Gorge, Tinmouth Channel, Brandon Swamp, Cornwall Swamp, Otter Creek, and Lower Otter Creek WMAs are all situated on Otter Creek or its tributaries.



#### Fishing Regulations

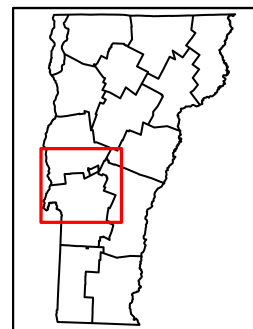
<https://www.eregulations.com/vermont/>



#### About Streambank Management Areas

Streambank Management Areas were purchased by the Vermont Fish & Wildlife Department to ensure access to the state's rivers for angling and other recreation, and to improve habitat for aquatic species.

The following maps are for illustrative purposes only. No warranty as to the accuracy or the usefulness of the data is expressed or implied. The sign to the right indicates SMA lands.



For more information regarding Otter Creek SMA, please contact the Rutland Fisheries office at (802) 786-0040.

#### Potential Target Species

- Smallmouth Bass*
- Rainbow Trout*
- Brook Trout*
- Brown Trout*
- Rock Bass*
- Yellow Perch*
- White/Longnose Sucker*
- Brown Bullhead*
- Fallfish*
- Northern Pike*
- Bluegill*
- Pumpkinseed*

#### Yellow Perch



#### Brown Trout

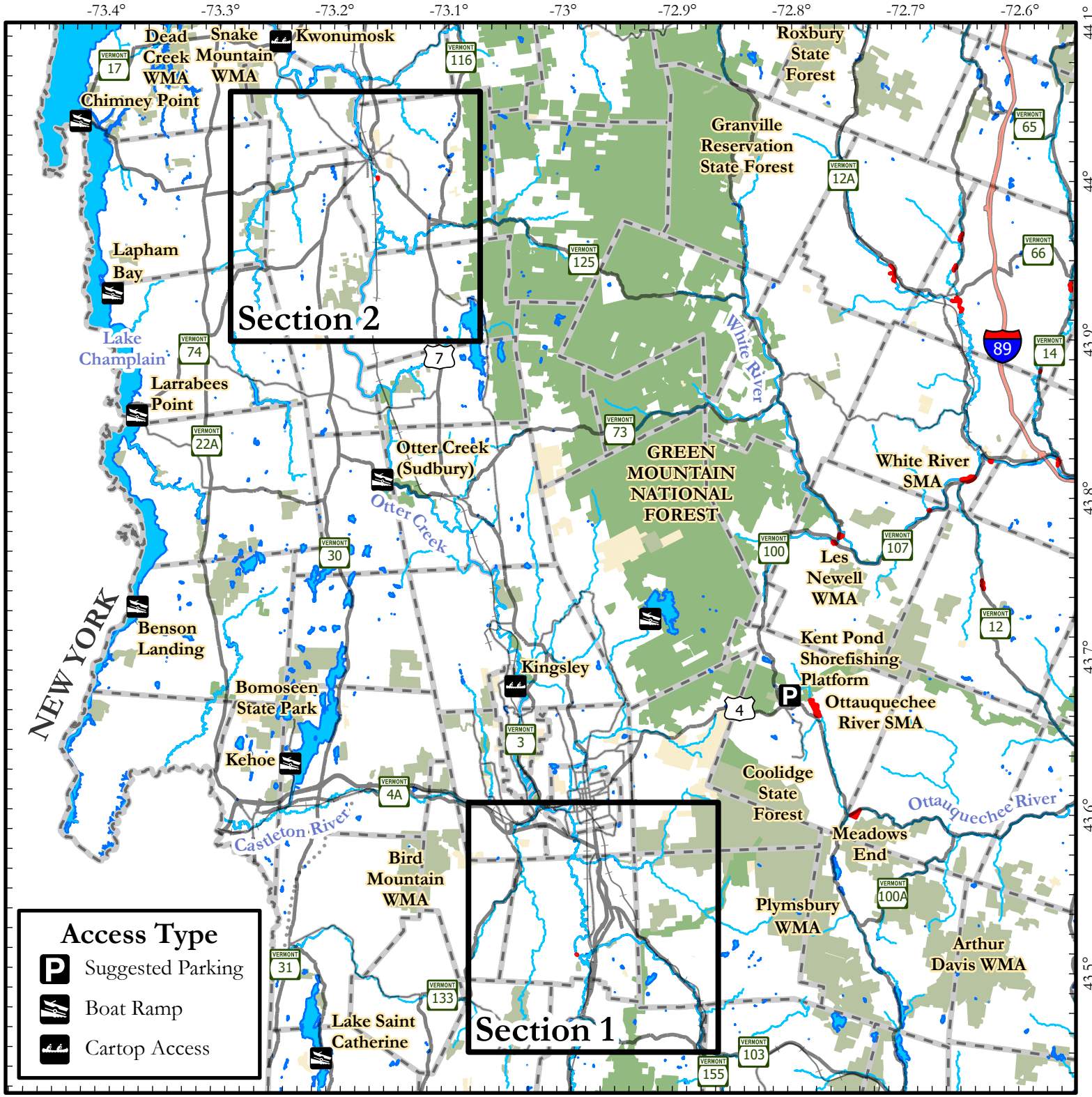


#### Smallmouth Bass



Stocking information for this river and other Vermont waterbodies: <https://anrweb.vt.gov/FWD/FW/FishStockingSearch.aspx>

Master Angler program info and entries from this river: <https://vtfishandwildlife.com/fish/fishing-events-and-programs/master-angler-program>



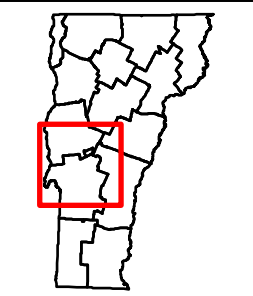
**Access Type**

- Suggested Parking
- Boat Ramp
- Cartop Access

**Otter Creek - Overview**

0 4 8 12 Miles

This map is for illustrative purposes only. The accuracy of the data layers shown on this map are limited by the accuracy of the source materials. No warranty as to the accuracy or the usefulness of the data is expressed or implied.



**Conserved Lands**

- Federal
- State
- Town
- Water
- Streambank Management Area

**Travel Routes**

- Town Boundary
- Interstate
- Highway
- Railroad



# Vermont Fish & Wildlife Department

## Otter Creek

### Streambank Management Area

#### Section 1

#### General Description

Section 1 of Otter Creek SMA consists of a single parcel near the confluence of Otter Creek and the Mill River in Clarendon. While the fishing at the parcel itself is underwhelming, those able to travel a short distance up- or downstream will find bountiful coldwater fisheries. Brook, Brown, and Rainbow Trout are common, as are Yellow Perch, White and Longnose Sucker, Fallfish, and Smallmouth Bass. Lower Clarendon Gorge State Forest and Clarendon Gorge WMA, a short paddle east along the Mill River, are both also great options to access the river.



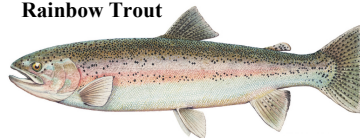
#### Potential Target Species

- Rainbow Trout*
- Brook Trout*
- Brown Trout*
- Yellow Perch*
- White/Longnose Sucker*
- Fallfish*
- Smallmouth Bass*

White Sucker



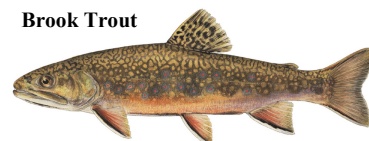
Rainbow Trout



Brown Trout



Brook Trout



#### Fishing Regulations

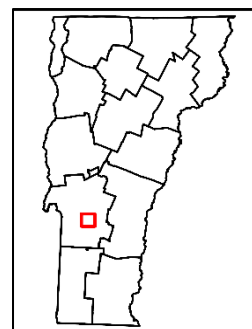
<https://www.eregulations.com/vermont/>



#### About Streambank Management Areas

Streambank Management Areas were purchased by the Vermont Fish & Wildlife Department to ensure access to the state's rivers for angling and other recreation, and to improve habitat for aquatic species.

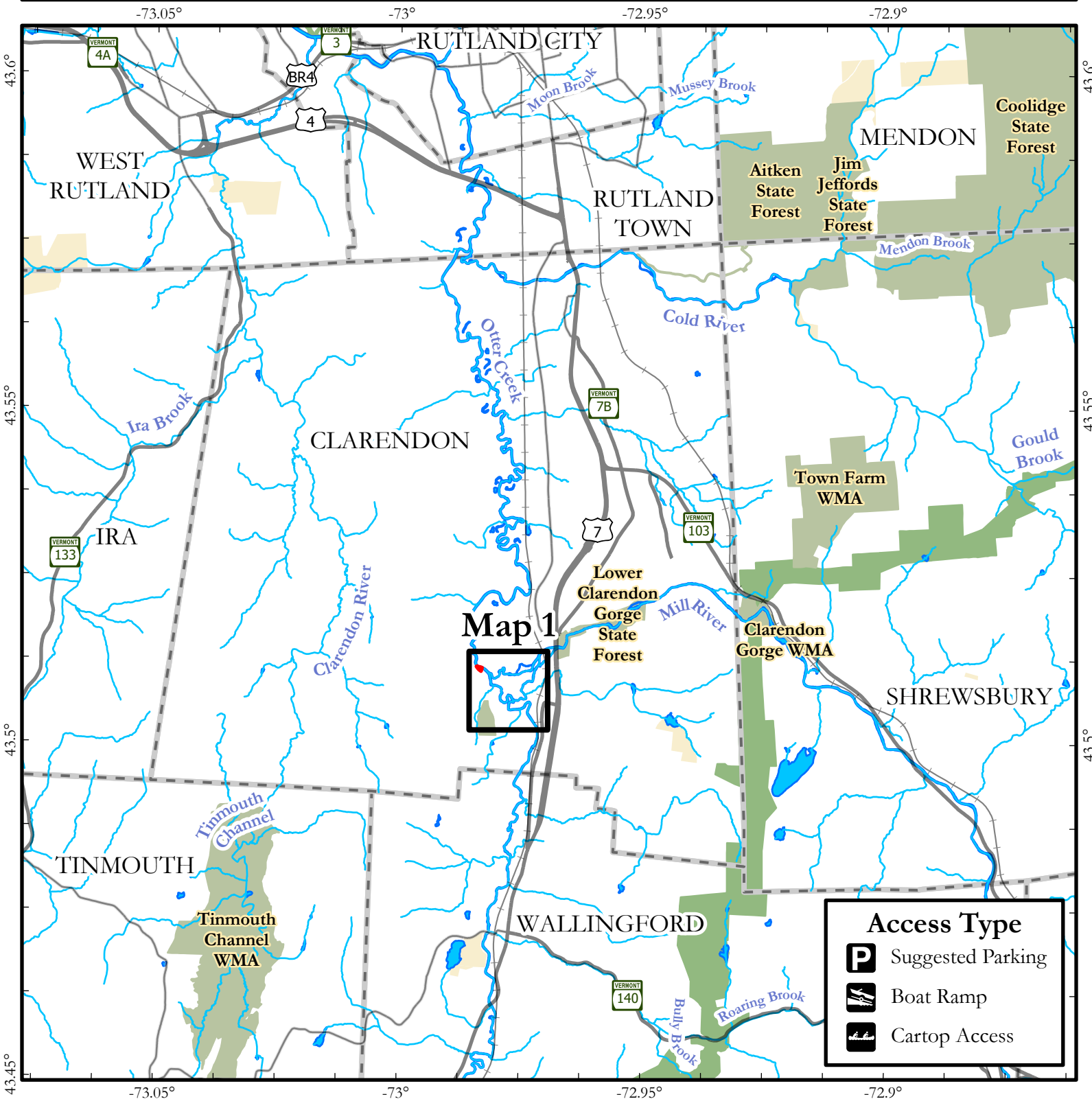
The following maps are for illustrative purposes only. No warranty as to the accuracy or the usefulness of the data is expressed or implied. The sign to the right indicates SMA lands.



For more information regarding Otter Creek SMA, please contact the Rutland Fisheries office at (802) 786-0040.

Stocking information for this river and other Vermont waterbodies: <https://anrweb.vt.gov/FWD/FW/FishStockingSearch.aspx>

Master Angler program info and entries from this river: <https://vtfishandwildlife.com/fish/fishing-events-and-programs/master-angler-program>

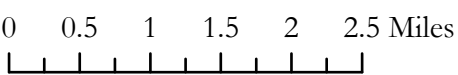


**Map 1**

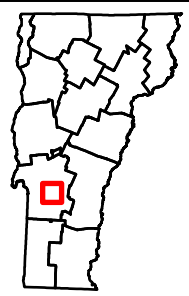
**Access Type**

- Suggested Parking
- Boat Ramp
- Cartop Access

**Section 1 - Overview**

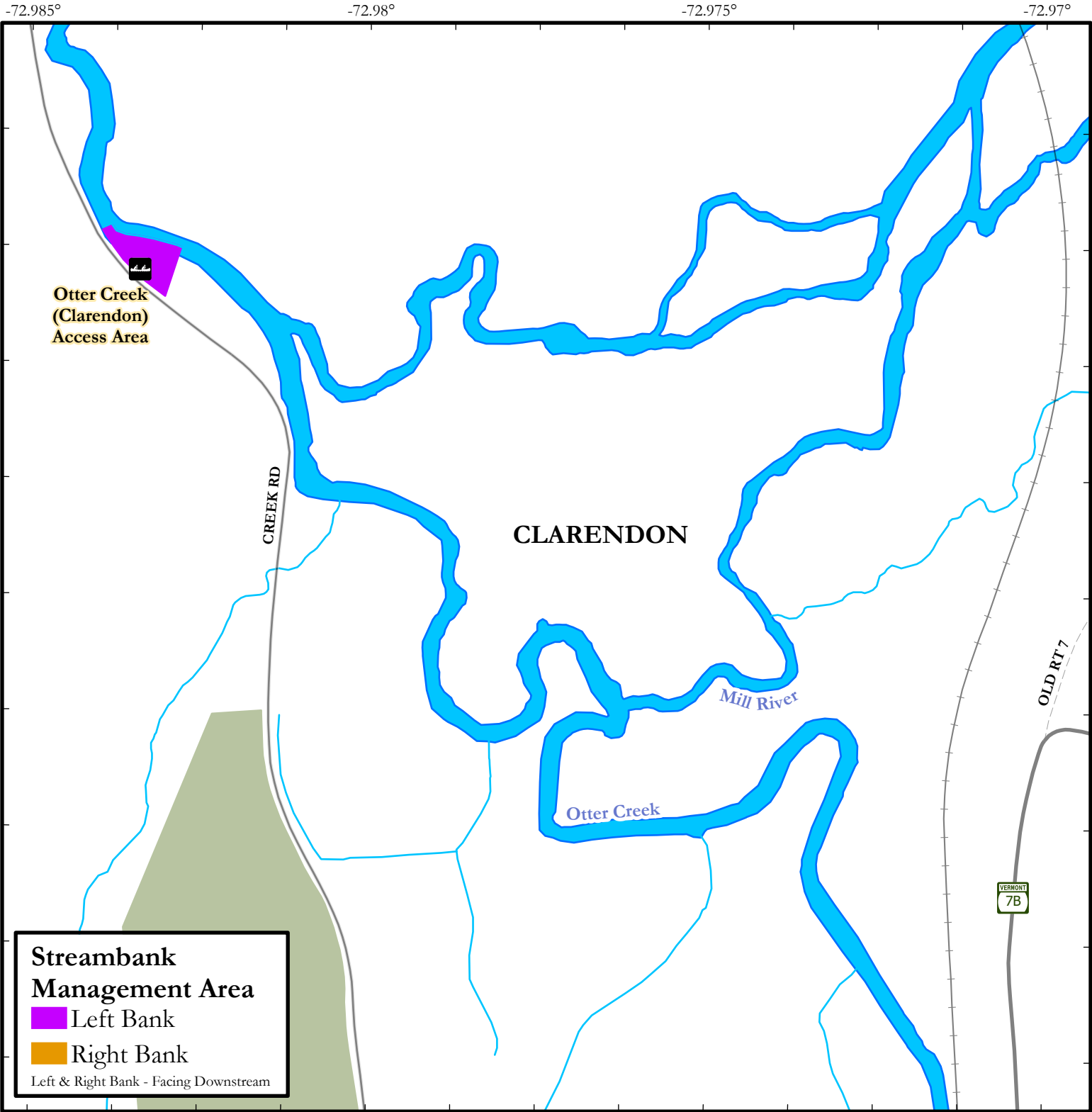


This map is for illustrative purposes only. The accuracy of the data layers shown on this map are limited by the accuracy of the source materials. No warranty as to the accuracy or the usefulness of the data is expressed or implied.



**Conserved Lands**

- Federal
- State
- Town
- Water
- Streambank Management Area
- Town Boundary
- Travel Routes**
- Interstate
- Highway
- Railroad



**Streambank Management Area**

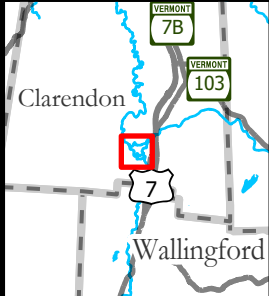
- Left Bank
- Right Bank

Left & Right Bank - Facing Downstream

**Section 1 - Map 1**

0 250 500 1000 Feet

This map is for illustrative purposes only. The accuracy of the data layers shown on this map are limited by the accuracy of the source materials. No warranty as to the accuracy or the usefulness of the data is expressed or implied.



**Conserved Lands**

- Federal
- State
- Town
- Water
- Town Boundary
- Foot Path
- Railroad
- P Suggested Parking
- ⚓ Cartop Access
- ⚓ Boat Ramp



# Vermont Fish & Wildlife Department

## Otter Creek

### Streambank Management Area

#### Section 2

#### General Description

Otter Creek SMA Section 2 provides access to Otter Creek as it flows through Middlebury. Although this stretch of the mainstem of Otter Creek remains relatively warm, many small, coldwater tributaries provide ample spawning opportunity for trout as well. This creates a unique fishery with wild adult coldwater fish mixing with warmwater fish. Some of the largest trout in Otter Creek are found in this stretch, fed by abundant Fallfish and often targeted in tailwaters just below dams. Northern Pike and Smallmouth Bass are other popular target species.



#### Fishing Regulations

<https://www.eregulations.com/vermont/>



#### About Streambank Management Areas

Streambank Management Areas were purchased by the Vermont Fish & Wildlife Department to ensure access to the state's rivers for angling and other recreation, and to improve habitat for aquatic species.

The following maps are for illustrative purposes only. No warranty as to the accuracy or the usefulness of the data is expressed or implied. The sign to the right indicates SMA lands.



#### Potential Target Species

- Smallmouth Bass*
- Rock Bass*
- Yellow Perch*
- White/Longnose Sucker*
- Brown Bullhead*
- Fallfish*
- Northern Pike*
- Bluegill*
- Pumpkinseed*
- Rainbow Trout*
- Brown Trout*
- Brook Trout*

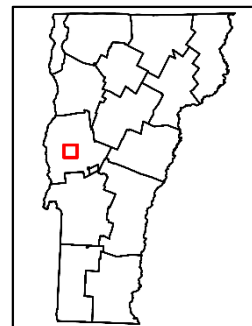
#### Smallmouth Bass



#### Northern Pike



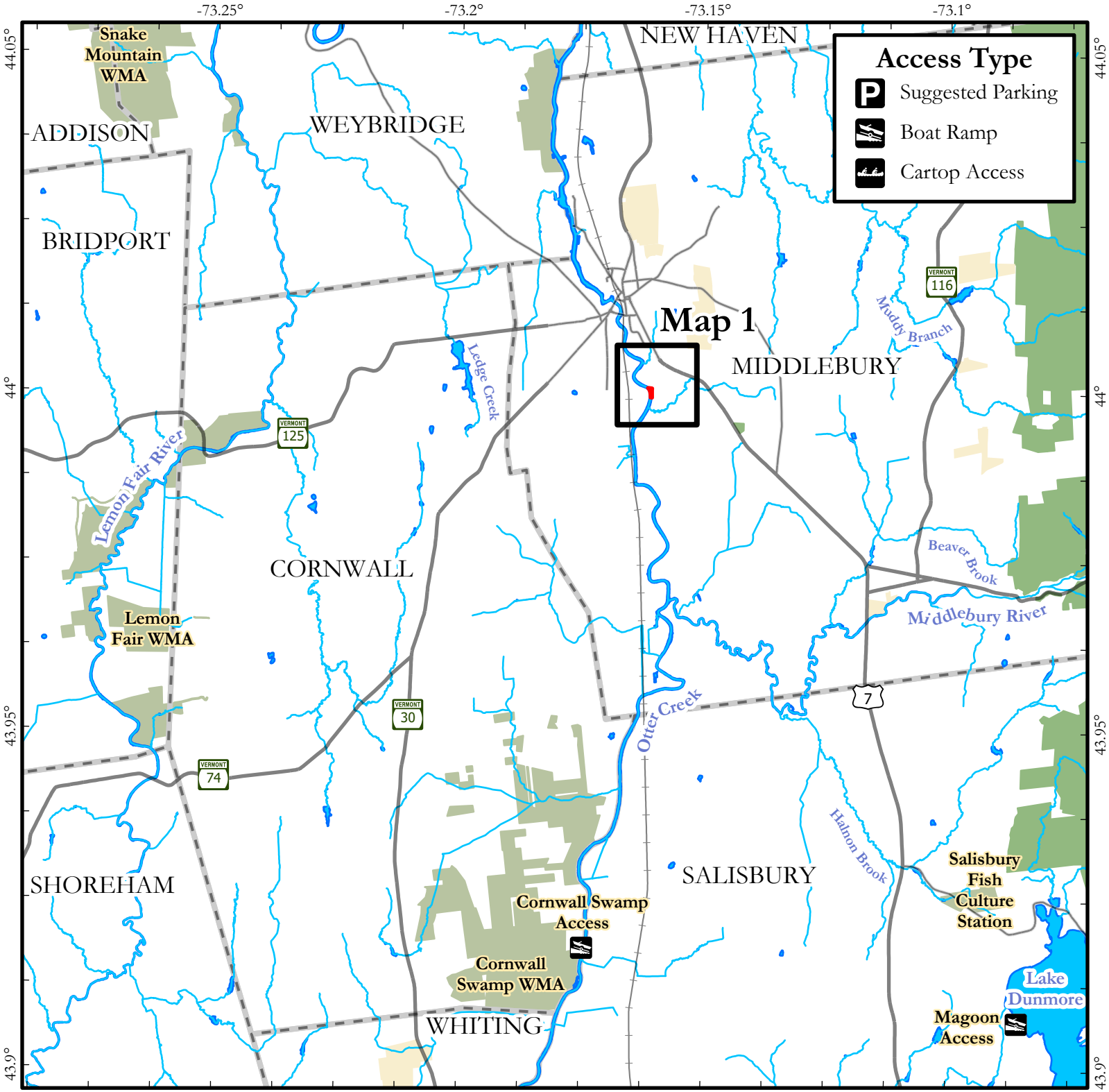
#### Fallfish



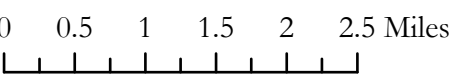
For more information regarding Otter Creek SMA, please contact the Rutland Fisheries office at (802) 786-0040.

Stocking information for this river and other Vermont waterbodies: <https://anrweb.vt.gov/FWD/FW/FishStockingSearch.aspx>

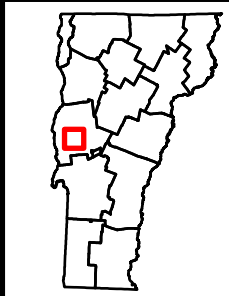
Master Angler program info and entries from this river: <https://vtfishandwildlife.com/fish/fishing-events-and-programs/master-angler-program>



**Section 2 - Overview**

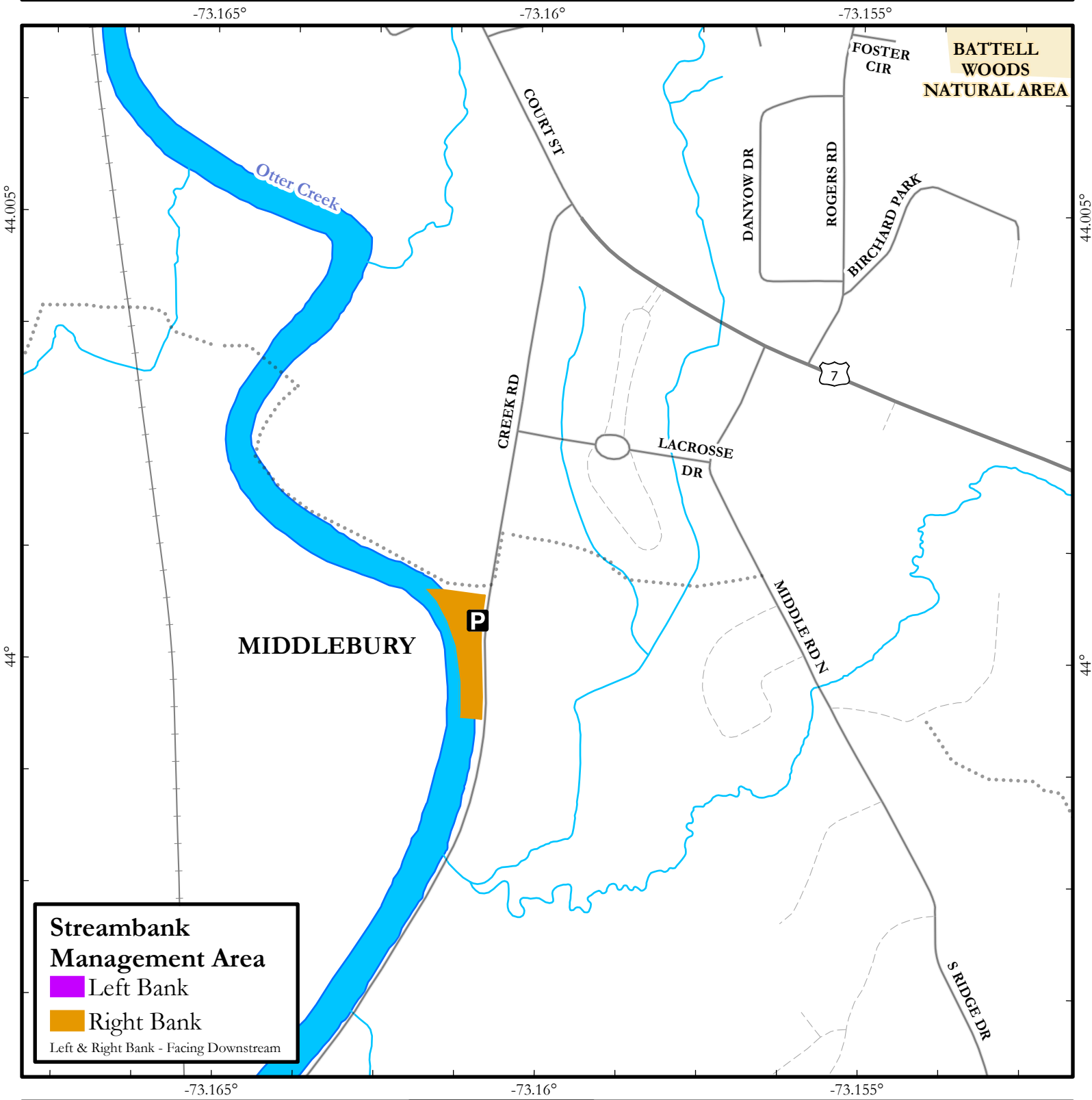


This map is for illustrative purposes only. The accuracy of the data layers shown on this map are limited by the accuracy of the source materials. No warranty as to the accuracy or the usefulness of the data is expressed or implied.



**Conserved Lands**

- Federal
- State
- Town
- Water
- Streambank Management Area
- Town Boundary
- Travel Routes**
- Interstate
- Highway
- Railroad



**Streambank Management Area**

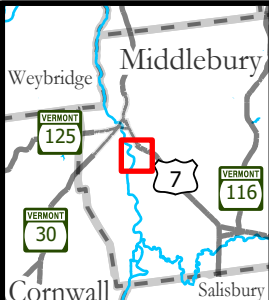
- Left Bank
- Right Bank

Left & Right Bank - Facing Downstream

**Section 2 - Map 1**

0 250 500 1000 Feet

This map is for illustrative purposes only. The accuracy of the data layers shown on this map are limited by the accuracy of the source materials. No warranty as to the accuracy or the usefulness of the data is expressed or implied.



**Conserved Lands**

- Federal
- State
- Town
- Water
- Town Boundary

- Foot Path
- Railroad
- Suggested Parking (P)
- Cartop Access
- Boat Ramp